

## 2018 License Transfer Guide

Used when you are transferring a license from another computer

A license is like a token. Once you have one you can move it from one computer to another. But it can only exist on one computer at any given time.

This guide shows you how to transfer the license that exists on one machine (the Source), to another machine (the Target).

### **IMPORTANT:**

This process can be slightly different depending on whether you purchased on-line or not.

***You don't have to remember if it was purchased on line or not, the program will do that for you.***

The difference is just that you will see different screens for receiving and entering the registration codes.

As you run the transfer function you'll see slightly different screens.

### **Page 2 to 5**

shows you the process for when you had purchased on-line.

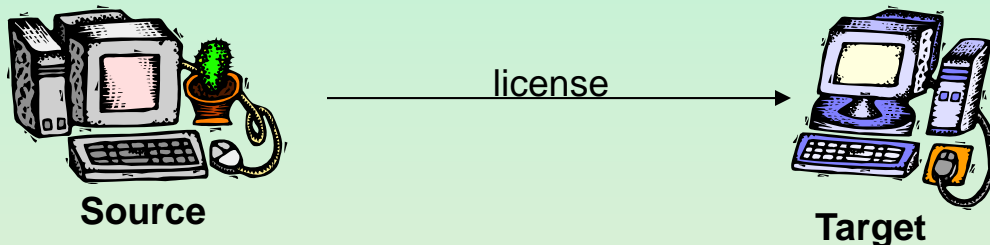
### **Page 6 to 7**

shows you the process for when you had purchased by FAX or USMail

# Transfer Overview

A license is like a token. Once you have one you can move it from one computer to another. But it can only exist on one computer at any given time.

This guide shows you how to transfer the license that exists on one machine (the Source), to another machine (the Target).



## Basic Overview

(See page 3 for detailed instructions)

### Step 1

Install the TRIAL program on the **TARGET** - get the license code (if needed)

### Step 2

Run the REGISTRATION DASHBOARD program on the **SOURCE** - type in the license code from the **TARGET (if needed)**.

You will receive a registration code.

The **SOURCE** is now converted back to a TRIAL program.

### Step 3

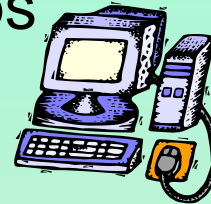
Type in the registration code from the **SOURCE** . The **TARGET** is now licensed for full use!

Go to page 3

# Transfer – First Steps



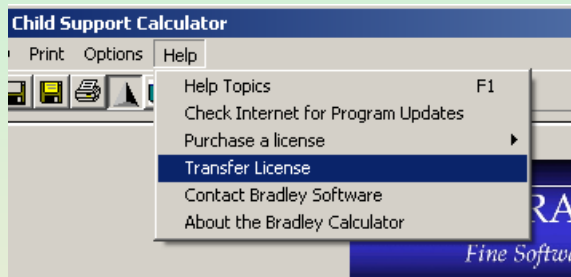
**SOURCE** computer  
(The one you are moving the software from)



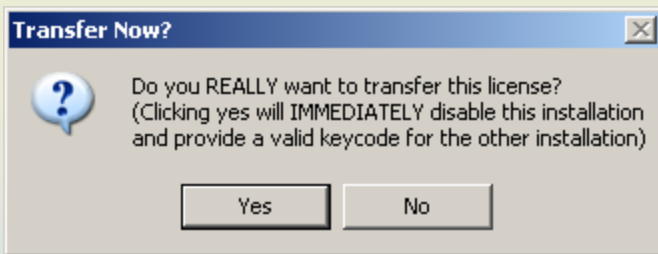
**TARGET** computer  
(the one you are moving the software to)

## Step 2

Run the licensed program. Click on HELP then click on TRANSFER LICENSE

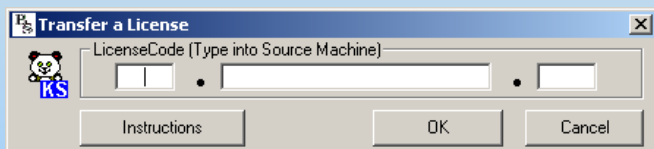


A new window appears.



Click YES

**The next window will appear. Depending on how it looks follow these instructions**



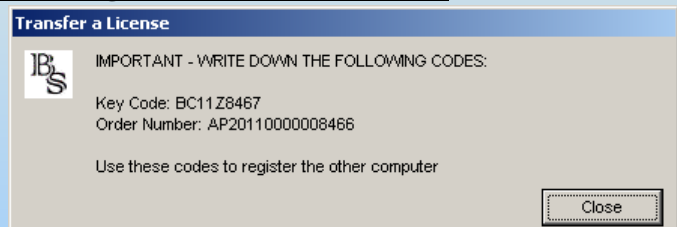
If it looks like this then go to page 6

## Step 1

Install the Trial program in the PC that you want to move the license to.



Leave it open to this screen  
Go to Step 2 (shown on left)

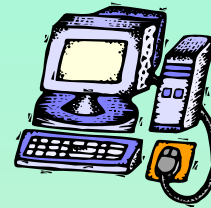


If it looks like this then go to page 4



**SOURCE** computer  
(The one you are moving the software from)

The source program is now disabled for full use.



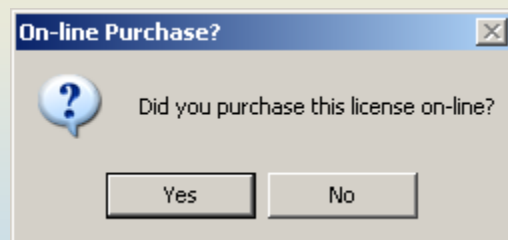
**TARGET** computer  
(the one you are moving the software to)

### Step 3

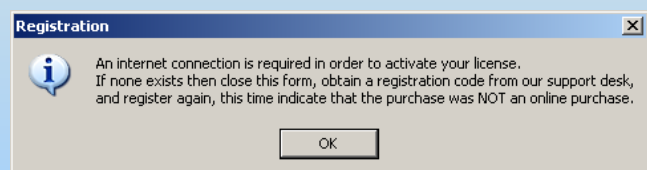
Click the button circled in RED below.



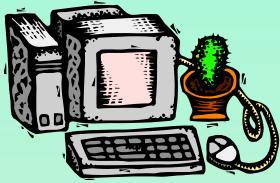
A new window appears



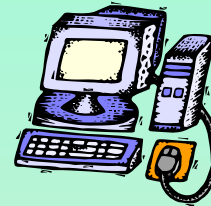
Click YES



Click OK – **GO TO PAGE 5**



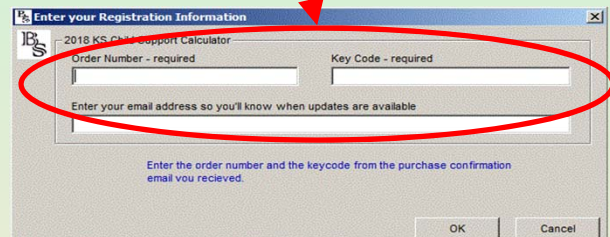
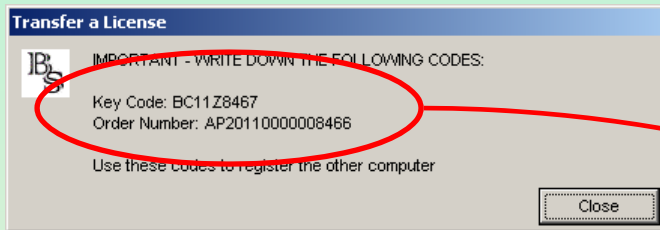
**SOURCE** computer  
(The one you are moving the software from)



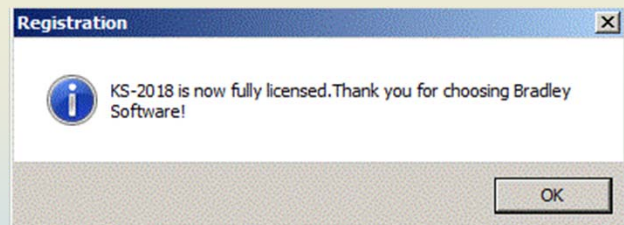
**TARGET** computer  
(the one you are moving the software to)

### Step 4

Enter the Order Number and Key Code from the SOURCE computer.



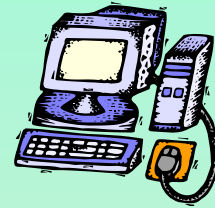
Click OK



**You are now done  
and the new  
computer is  
licensed.**



**SOURCE** computer  
(The one you are moving the software from)



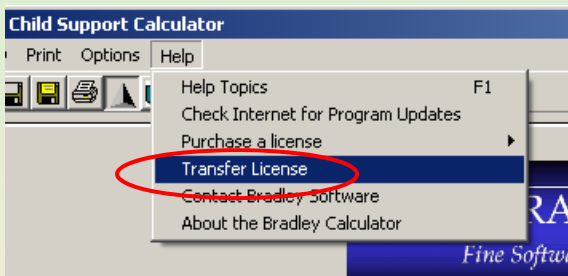
**TARGET** computer  
(the one you are moving the software to)

### Step 1

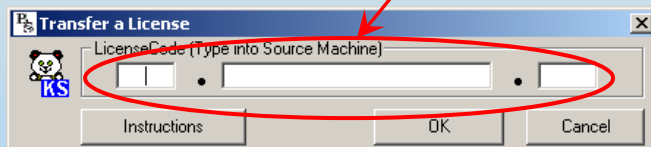
Install and run the Program you want to license.

### Step 2

Run the licensed program. Click on HELP then click on TRANSFER LICENSE



A new window appears.

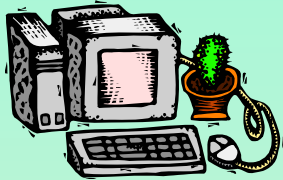


Type in the number from the **TARGET** Machine. Click OK



Write down the number circled above and take this code into the **SOURCE** computer.

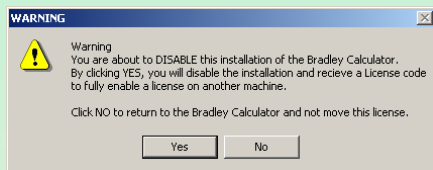




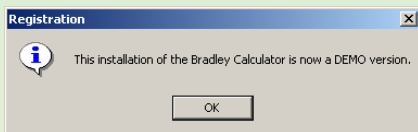
**SOURCE** computer  
 (The one you are moving the software from)

**Step 2 (cont'd)**

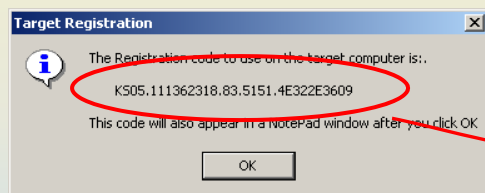
If you are absolutely sure, click YES



The Source program is now a TRIAL PROGRAM.

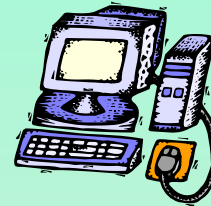


A registration code window appears. Write down the registration code.



Take the registration code to the TARGET computer.

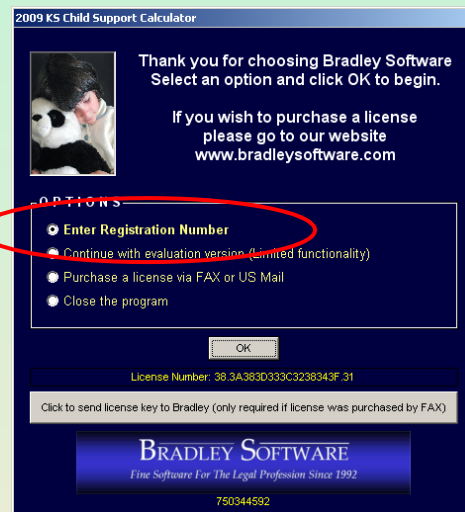
You are now finished with the Source computer. You can uninstall the Trial program if you want.



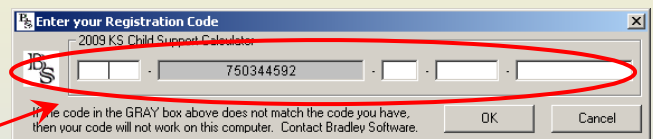
**TARGET** computer  
 (the one you are moving the software to)

**Step 3**

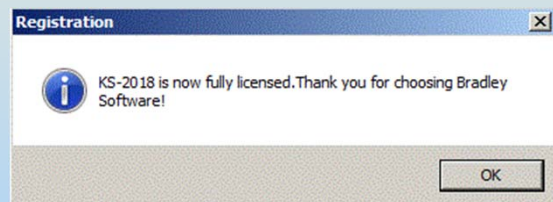
Select REGISTER and click on the OK button.



A new window appears.



Type the registration code from the SOURCE computer into the fields. Click NEXT



**Congratulations! You are now finished and the license has been transferred to the Target computer.**